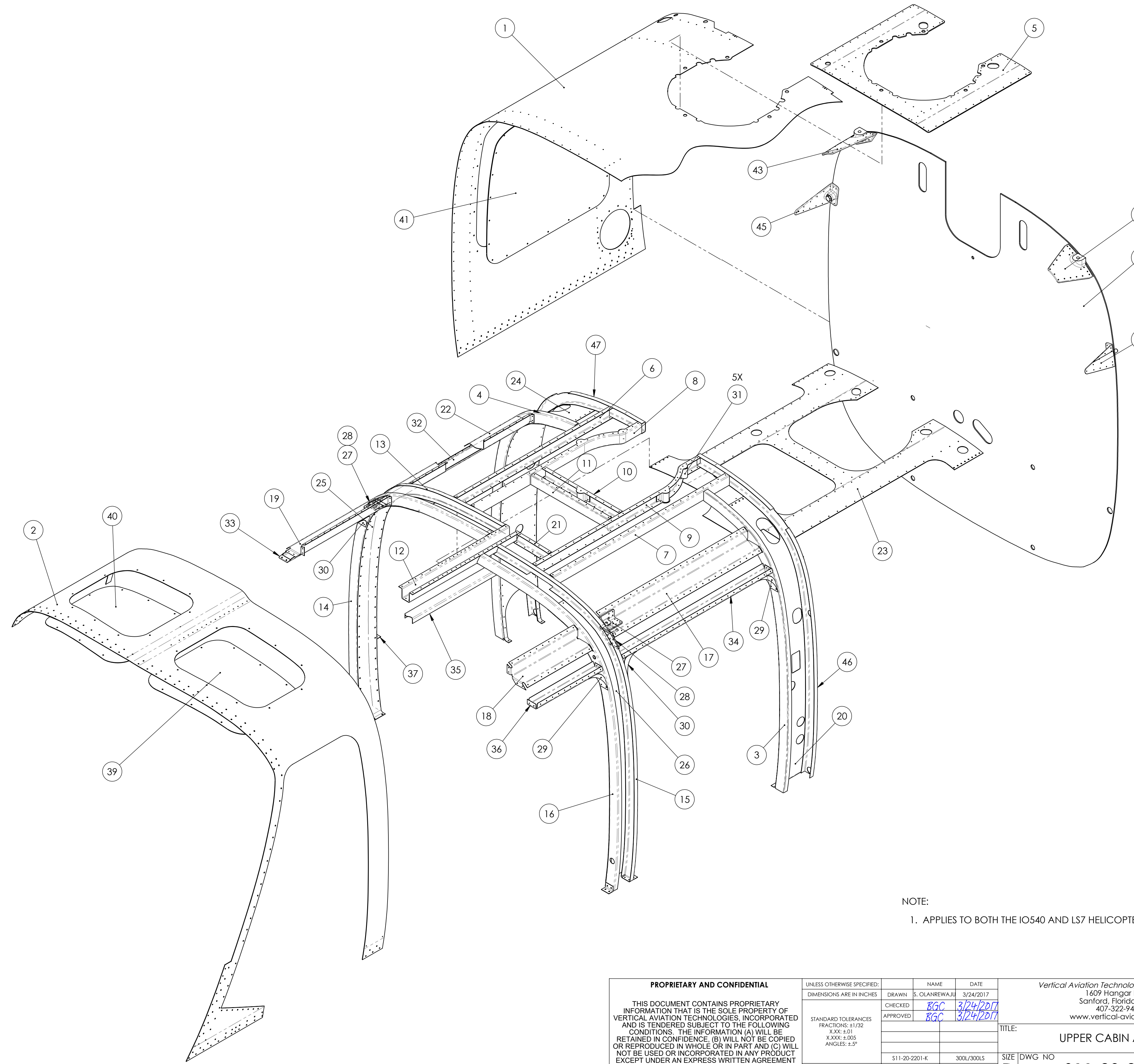


REVISIONS				
ZONE	REV.	DESCRIPTION	DATE	APPROVED
	A	REDRAWN IN CAD	3/24/2017	BGC

FIND NO.	QTY.	PART NUMBER	DESCRIPTION	DIAMETER	THICKNESS	MATERIAL	COML. SPEC.
48	1	S11-20-3581	PANEL, FUSELAGE FIREWALL, STATION 101.00	N/A	.141	PLYMETAL	MAKE FROM HASKELUITE PLYMETAL
47	1	S11-20-3241-2	R.H. CHANNEL, FUSELAGE, CENTER SECTION STA.101	N/A	.040	ALUMINUM ALLOY	2024-T4
46	1	S11-20-3241-1	L.H. CHANNEL, FUSELAGE, CENTER SECTION STA.101	N/A	.040	ALUMINUM ALLOY	2024-T4
45	1	S11-20-3135-2	FITTING ASSEM.FUSELAGE - STA. 101, TAIL CONE SUPPORT				SUB-ASSEMBLY
44	1	S11-20-3135-1	FITTING ASSEM.FUSELAGE - STA. 101, TAIL CONE SUPPORT				SUB-ASSEMBLY
43	1	S11-20-2523-4	FITTING, FUSELAGE PYLON, ATTACHING - AFT	N/A	N/A	ALUMINUM ALLOY	2024-T3
42	1	S11-20-2523-1	FITTING L.H., FUSELAGE PYLON, ATTACHING AFT.	N/A	N/A	ALUMINUM ALLOY	2024-T3
41	1	S11-20-2314	SIDE WINDOW, FUSELAGE, UPPER CABIN ASSEMBLY				CLEAR LUCITE CP (0124812FM)
40	1	S11-20-2311-2	RH TOP WINDOW, FUSELAGE, UPPER CABIN	N/A	.118	PLEXIGLASS	N/A
39	1	S11-20-2311-1	LH TOP WINDOW, FUSELAGE, UPPER CABIN	N/A	.118	PLEXIGLASS	N/A
38	2	S11-20-2309	ANGLE, FUSELAGE, UPPER CABIN	N/A	.040	ALUMINUM ALLOY	2024-T3
37	1	S11-20-2308	ANGLE, FUSELAGE, UPPER CABIN	N/A	.040	ALUMINUM ALLOY	2024-T3
36	1	S11-20-2306	CHANNEL, FUSELAGE, UPPER CABIN	N/A	.040	ALUMINUM ALLOY	2024-T3
35	1	S11-20-2305	CHANNEL, SIDE WINDOW, FUSELAGE, UPPER CABIN	N/A	.040	ALUMINUM ALLOY	2024-T3
34	1	S11-20-2303	CHANNEL, FUSELAGE, UPPER CABIN	N/A	.040	ALUMINUM ALLOY	2024-T3
33	1	S11-20-2302	CHANNEL, FUSELAGE, UPPER CABIN	N/A	.040	ALUMINUM ALLOY	2024-T3
32	1	S11-20-2301	CHANNEL, FUSELAGE, UPPER CABIN	N/A	.040	ALUMINUM ALLOY	2024-T3
31	5	S11-20-2279	SPACER, FUSELAGE, GEAR HOUSING ATTACH.	N/A	1 3/4	ALUMINUM ALLOY	A356.0-T6
30	2	S11-20-2249-2	DOOR CORNER FAIRING, FUSELAGE, UPPER CABIN	N/A	.040	ALUMINUM ALLOY	2024-T4
29	2	S11-20-2249-1	DOOR CORNER FAIRING, FUSELAGE, UPPER CABIN	N/A	.040	ALUMINUM ALLOY	2024-T4
28	2	S11-20-2248	ANGLE, FUSELAGE, UPPER CABIN	N/A	.250	ALUMINUM ALLOY	2024-T3
27	2	S11-20-2245	FITTING, FUSELAGE PYLON, ATTACHING - FWD.	N/A	N/A	ALUMINUM ALLOY	A356.0-T6
26	1	S11-20-2241	SKIN (INNER), FUSELAGE, CABIN STA. 61-65	N/A	.040	ALUMINUM ALLOY	2024-T3
25	1	S11-20-2240	SKIN (INNER), FUSELAGE, CABIN STA. 65-68 7/8	N/A	.040	ALUMINUM ALLOY	2024-T3
24	1	S11-20-2239	SKIN (INNER), FUSELAGE, CABIN STA. 83 1/2 - 101	N/A	.050	ALUMINUM ALLOY	AZ31B-H24
23	1	S11-20-2238	SKIN (INNER), FUSELAGE, CABIN STA. 61-101	N/A	.040	ALUMINUM ALLOY	2024-T3
22	1	S11-20-2237	STIFFENER, FUSELAGE, CABIN STA. 69 - 93 1/2	N/A	.040	ALUMINUM ALLOY	2024-T3
21	1	S11-20-2236	FRAME, FUSELAGE, CABIN STA. 69	N/A	.040	ALUMINUM ALLOY	2024-T4
20	1	S11-20-2234	SKIN (INNER), FUSELAGE, CABIN STA. 75-101	N/A	.050	ALUMINUM ALLOY	2024-T3
19	1	S11-20-2233-2	STIFFENER, FUSELAGE, CABIN, W.L. 25 1/2	N/A	.040	ALUMINUM ALLOY	2024-T3
18	1	S11-20-2233-1	STIFFENER, FUSELAGE, CABIN, W.L. 25 1/2	N/A	.040	ALUMINUM ALLOY	2024-T3
17	1	S11-20-2232	STIFFENER, FUSELAGE, CABIN W.L. 25 1/2	N/A	.040	ALUMINUM ALLOY	2024-T3
16	1	S11-20-2230-4	FORMER, FUSELAGE, COMMON FRAME	N/A	.040	ALUMINUM ALLOY	2024-T4
15	1	S11-20-2230-3	FORMER, FUSELAGE, COMMON FRAME	N/A	.040	ALUMINUM ALLOY	2024-T4
14	1	S11-20-2230-2	FORMER, FUSELAGE, COMMON FRAME	N/A	.040	ALUMINUM ALLOY	2024-T4
13	1	S11-20-2230-1	FORMER, FUSELAGE, COMMON FRAME	N/A	.040	ALUMINUM ALLOY	2024-T4
12	1	S11-20-2228	STIFFENER, FUSELAGE, CABIN STA. 33-60	N/A	.040	ALUMINUM ALLOY	2024-T3
11	1	S11-20-2227	CHANNEL, FUSELAGE, CABIN STA. 80	N/A	.040	ALUMINUM ALLOY	2024-T3
10	1	S11-20-2226	CHANNEL, FUSELAGE, CABIN STA. 83 1/4	N/A	.040	ALUMINUM ALLOY	2024-T3
9	1	S11-20-2225	CHANNEL, FUSELAGE, CABIN STA. 65-101	N/A	.040	ALUMINUM ALLOY	2024-T4
8	1	S11-20-2224	CHANNEL, FUSELAGE, CABIN STA. 69-101	N/A	.040	ALUMINUM ALLOY	2024-T4
7	1	S11-20-2223	CHANNEL, FUSELAGE, CABIN STA. 65-101	N/A	.040	ALUMINUM ALLOY	2024-T3
6	1	S11-20-2222	CHANNEL, FUSELAGE, CABIN STA. 69-101	N/A	.040	ALUMINUM ALLOY	2024-T3
5	1	S11-20-2221	PLATE, FUSELAGE, UPPER CABIN	N/A	.125	ALUMINUM ALLOY	2024-T3
4	1	S11-20-2220-2	R.H. FRAME, FUSELAGE, CABIN STATION 93 1/2	N/A	.040	ALUMINUM ALLOY	2024-T4
3	1	S11-20-2220-1	L.H. FRAME, FUSELAGE, CABIN STATION 95	N/A	.040	ALUMINUM ALLOY	2024-T4
2	1	S11-20-2200-2	FORWARD SKIN, UPPER CABIN ASSEMBLY	N/A	.040	ALUMINUM ALLOY	2024-T3
1	1	S11-20-2200-1	REAR SKIN, UPPER CABIN ASSEMBLY	N/A	.040	ALUMINUM ALLOY	2024-T3



NOTE:
1. APPLIES TO BOTH THE IO540 AND LS7 HELICOPTERS.

PROPRIETARY AND CONFIDENTIAL THIS DOCUMENT CONTAINS PROPRIETARY INFORMATION THAT IS THE SOLE PROPERTY OF VERTICAL AVIATION TECHNOLOGIES, INCORPORATED AND IS TENDERED SUBJECT TO THE FOLLOWING CONDITIONS: THE INFORMATION (A) WILL BE RETAINED IN CONFIDENCE, (B) WILL NOT BE COPIED OR REPRODUCED IN WHOLE OR IN PART AND (C) WILL NOT BE USED OR INCORPORATED IN ANY PRODUCT EXCEPT UNDER AN EXPRESS WRITTEN AGREEMENT WITH VERTICAL AVIATION TECHNOLOGIES, INCORPORATED.	UNLESS OTHERWISE SPECIFIED: DIMENSIONS ARE IN INCHES	DRAWN S. OLANREWAJU	DATE 3/24/2017	Vertical Aviation Technologies, Incorporated 1609 Hangar Road Sanford, Florida 32773 407-322-9488 www.vertical-aviation.com	
	STANDARD TOLERANCES FRACTIONS: ±1/32 X.XXX: ±.01 X.XXX: ±.005 ANGLES: ±5°	CHECKED BGC	DATE 3/24/2017		APPROVED BGC
	INTERPRET GEOMETRIC TOLERANCING PER: ASME Y14.5	NEXT ASSY	USED ON		APPLICATION
	DO NOT SCALE DRAWING				

TITLE: UPPER CABIN ASSEMBLY	SIZE D	DWG NO S11-20-2200-K	REV A
SCALE: 1:12	WEIGHT: OZ	SHEET 1 OF 1	