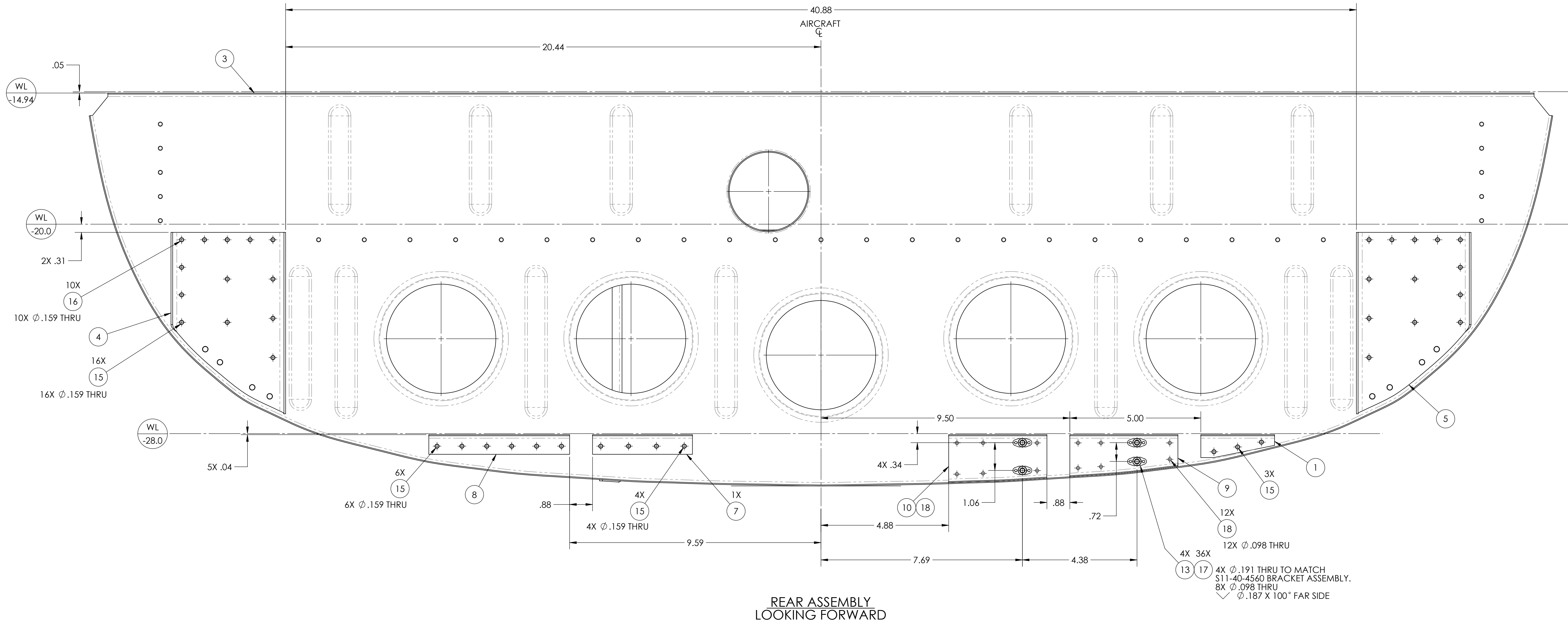


REVISIONS				
ZONE	REV.	DESCRIPTION	DATE	APPROVED
	M	REDRAWN IN CAD	02/13/2017	BGC



REAR ASSEMBLY
LOOKING FORWARD

FIND NO.	QTY.	PART NUMBER	DESCRIPTION	DIAMETER	THICKNESS
18	12	MS20426AD4-4	RIVET, 100° FLAT HEAD, SOLID, Ø.094 X 1/4		
17	36	MS20426AD3-4	RIVET, 100° COUNTERSUNK, SOLID, Ø.094 X 1/4		
16	10	MS20470AD5-6	RIVET, UNIVERSAL HEAD, SOLID, Ø.156 X 3/8		
15	62	MS20470AD5-5	RIVET, UNIVERSAL HEAD, SOLID, Ø.156 X 5/16		
14	4	MS21080-3	NUT PLATE, ONE LUG, SELF-LOCKING, 10-32 UNF-3B		
13	14	MS21069-3	NUT PLATE, SELF-LOCKING, 10-32 UNF-3B		
12	1	S11-20-3618-2	ANGLE, FUSELAGE TUB, STATION 42.00	N/A	.040
11	1	S11-20-3618-1	ANGLE, FUSELAGE TUB, STATION 42.00	N/A	.040
10	1	S11-20-3580	CHANNEL, FUSELAGE, STATION 42.00	N/A	.040
9	1	S11-20-3579	CHANNEL, FUSELAGE, STATION 42.00	N/A	.040
8	1	S11-20-3574	ANGLE, FUSELAGE, TUB STATION 42.00 & 58.00	N/A	.040
7	1	S11-20-3573	ANGLE, FUSELAGE, TUB STATION 42.00 & 58.00	N/A	.040
6	1	S11-20-3560	ANGLE, FUSELAGE TUB, STATION 42.00	N/A	.040
5	1	S11-20-3510-3	LH CHANNEL, TUB STATION 42.00	N/A	.064
4	1	S11-20-3510-2	RH CHANNEL, TUB STATION 42.00	N/A	.064
3	1	S11-20-3510-1	FRAME, FUSELAGE TUB, STATION 42.00	N/A	.040
2	1	S11-20-3344	BRACKET, FLIGHT CONTROLS, BUNGEE SUPPORT - AFT	N/A	.051
1	1	S11-20-3266-3	ANGLE, FUSELAGE, STATION 42.00	N/A	.040

PROPRIETARY AND CONFIDENTIAL

THIS DOCUMENT CONTAINS PROPRIETARY INFORMATION THAT IS THE SOLE PROPERTY OF VERTICAL AVIATION TECHNOLOGIES, INCORPORATED AND IS TENDERED SUBJECT TO THE FOLLOWING CONDITIONS: THE INFORMATION (A) WILL BE RETAINED IN CONFIDENCE, (B) WILL NOT BE COPIED OR REPRODUCED IN WHOLE OR IN PART AND (C) WILL NOT BE USED OR INCORPORATED IN ANY PRODUCT EXCEPT UNDER AN EXPRESS WRITTEN AGREEMENT WITH VERTICAL AVIATION TECHNOLOGIES, INCORPORATED.

UNLESS OTHERWISE SPECIFIED: DIMENSIONS ARE IN INCHES	DRAWN J. BODJACK	NAME	DATE
STANDARD TOLERANCES FRACTIONS: ±1/32 X.XX: ±0.01 X.XXX: ±0.005 ANGLES: ±5°	CHECKED BGC		02/13/2017
INTERPRET GEOMETRIC TOLERANCING PER: ASME Y14.5	APPROVED BGC		
DO NOT SCALE DRAWING			

Vertical Aviation Technologies, Incorporated
1609 Hangar Road
Sanford, Florida 32773
407-322-9488
www.vertical-aviation.com

TITLE: FRAME ASSEMBLY, FUSELAGE TUB, STATION 42.0

SIZE: DWG NO. **D** S11-20-3510-K REV **M**

SCALE: 1:2 WEIGHT: 33.0 OZ SHEET 1 OF 3

8

7

6

5

4

3

2

1

D

D

C

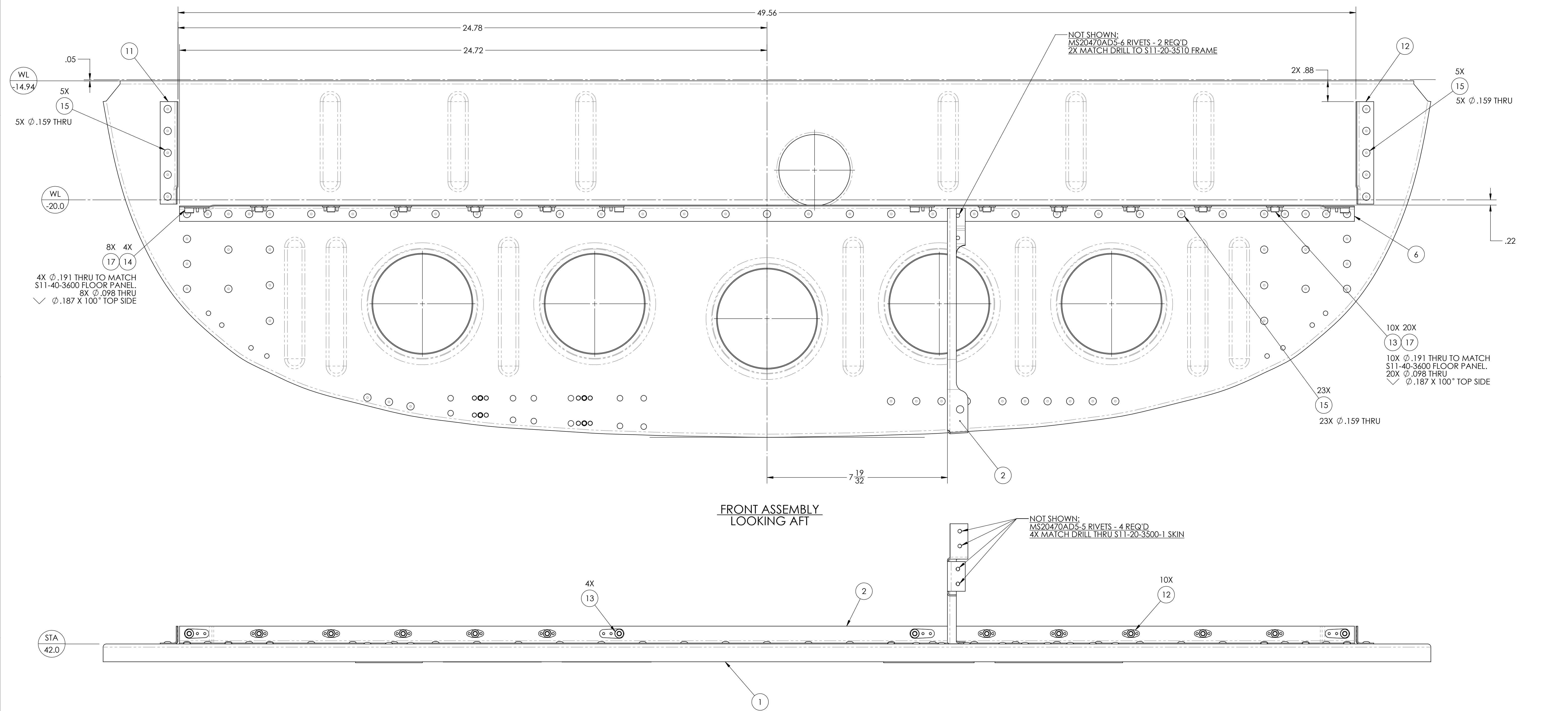
C

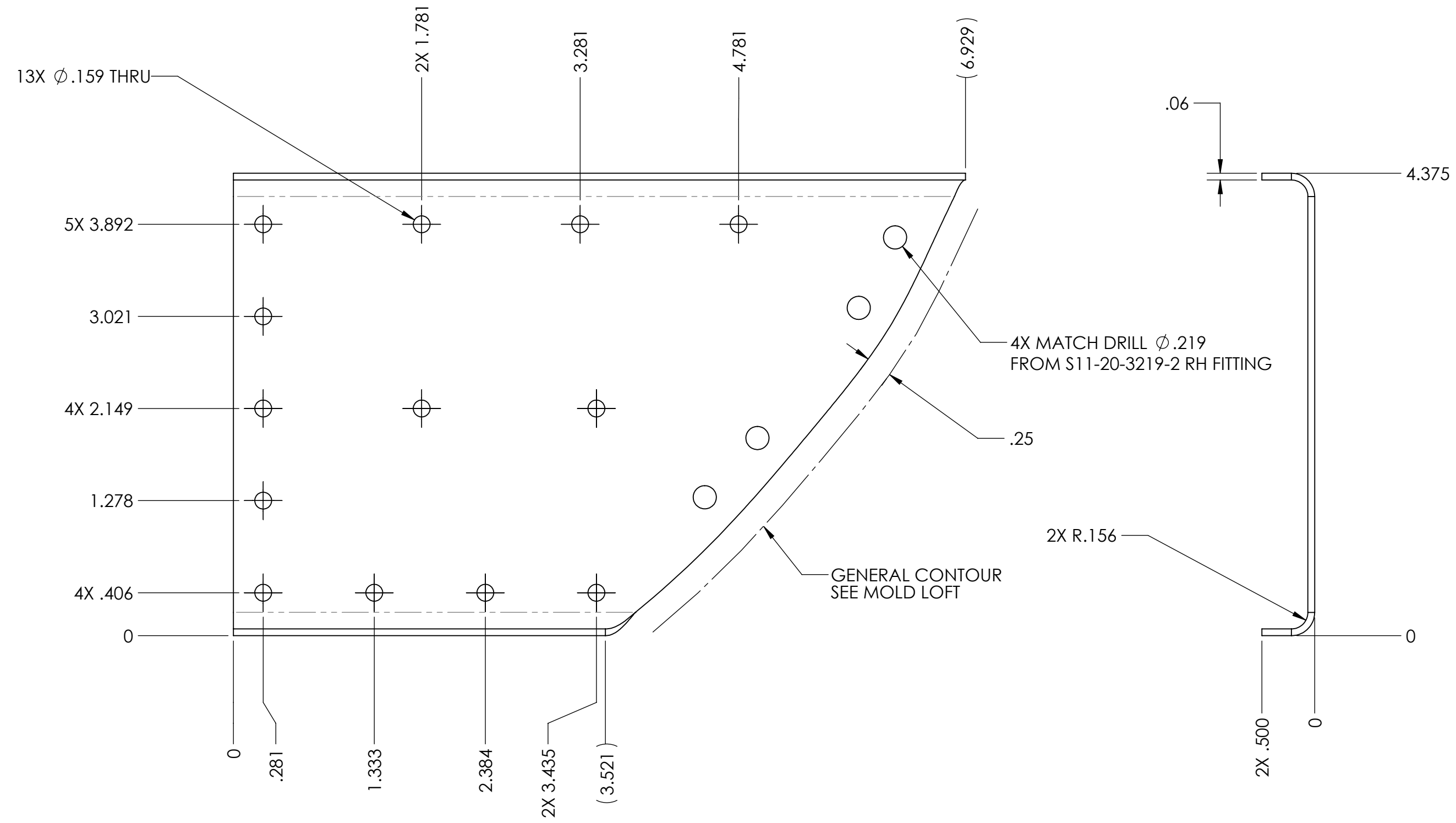
B

B

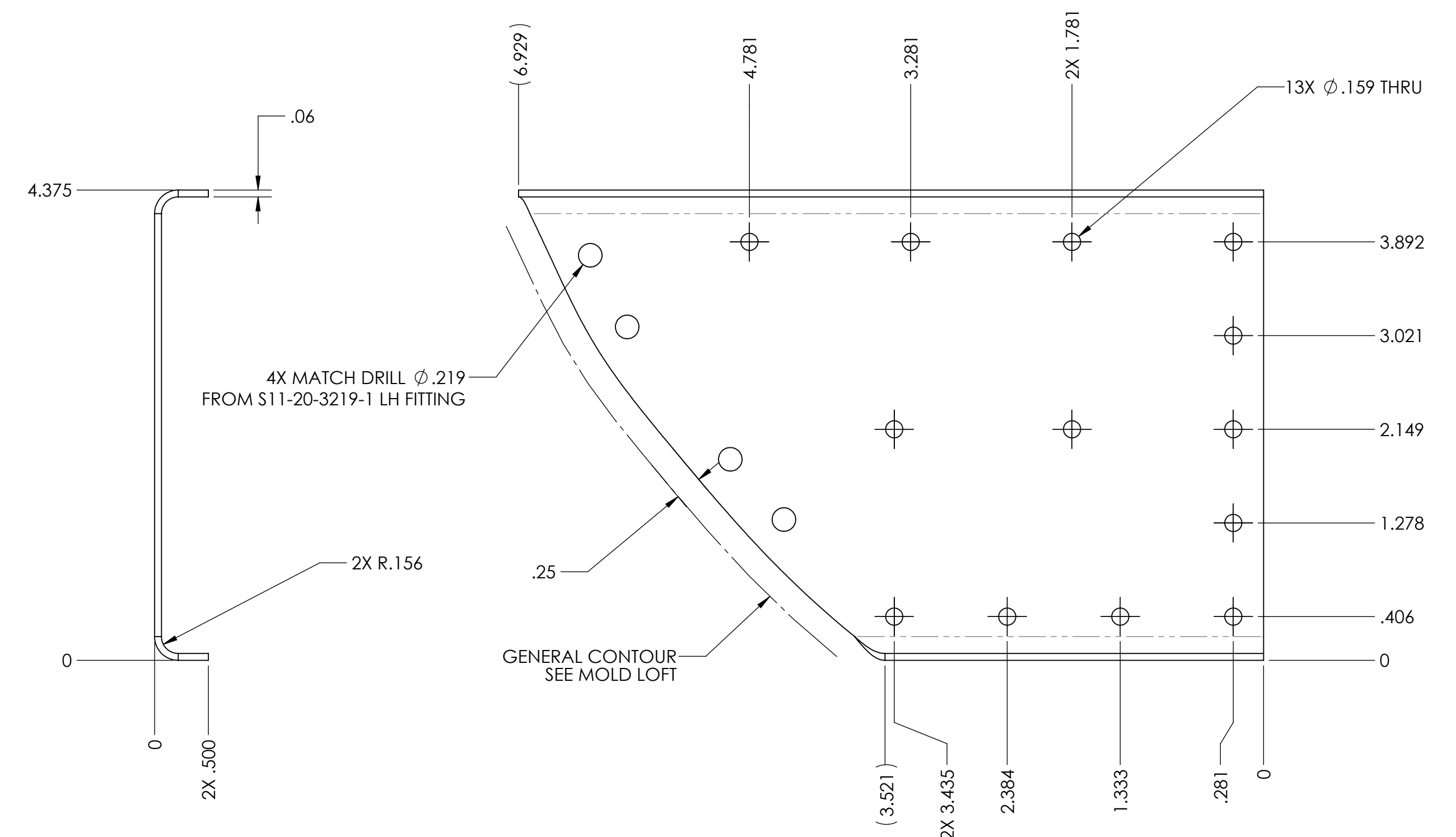
A

A





S11-20-3510-2
SCALE 1:1



S11-20-3510-3
SCALE 1:1